




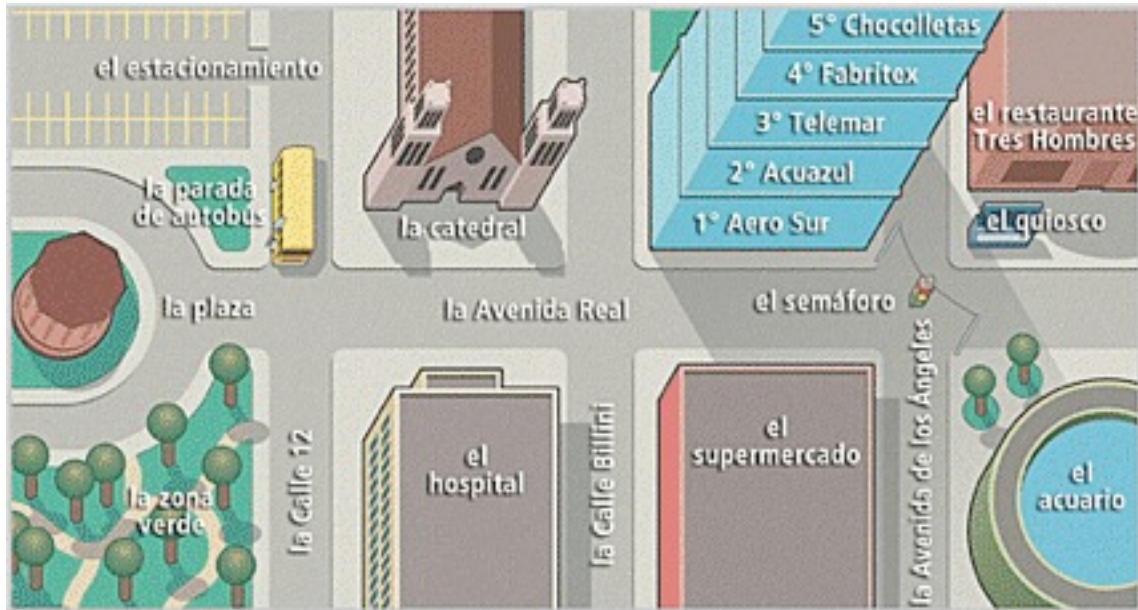
 <p>Create a brochure about places to see and activities to do in this town. Include 3 buildings from this map with an original image for each building, and a brief description of what there is to do at these places. Use Paint to create the images and Word to put the brochure together.</p>	 <p>Create an 8 line rhyme <i>about places on this map</i> beginning with the following first two lines:</p> <p>Hay un restaurante Ven a acompañarme</p> <p>_____</p> <p>_____</p> <p>_____</p> <p>_____</p> <p>_____</p> <p>_____</p> <p>Use http://www.alcor.com.au/spanish_rhyming_dictionary.asp for help finding rhymes. You will present this to the class.</p>
 <p>In most towns, which landmarks are the most common? What important places are missing from this map? Provide a 1-2 minute explanation of the most important landmarks found on this map and missing landmarks. Use Audacity and save as an mp3. See attached document if you forget how to save an Audacity file as an mp3.</p>	 <p>Identify the least important landmark in this map (do not use la zona verde). In a Google document, explain why it is the least important.</p>
 <p>Your friend, Juan, from out of town is at la zona verde. He needs to visit his grandfather in the hospital, pick up milk at the supermarket, get a newspaper from the kiosk, and meet you at Telemar. Using your cell phone, call my school voicemail and leave a message providing directions in order for Juan to get to all of these places (267) 893-3000 EXT 3079.</p>	 <p>The township has decided to get rid of la zona verde (green zone). Argue against this change. Pretend I am the township, and send me an e-mail (agever@cbsd.org) explaining why this change should not occur.</p>

Think Dot at-level learners

Nombre: _____

Directions: Use the following map and worksheet to help you to answer the Think Dot questions.



1. Create a brochure about places to see and activities to do in this town. Include 3 buildings from this map with an original image for each building, and a brief description of what there is to do at these places. Use Paint to create the images and Word to put the brochure together.

Building #1 _____

Activities: _____

Building #2 _____

Activities: _____

Building #3 _____

Activities: _____

2. Create an 8 line rhyme *about places on this map* beginning with the following first two lines:

Hay un restaurante
Ven a acompañarme

Use http://www.alcor.com.au/spanish_rhyming_dictionary.asp for help finding rhymes. You will present this to the class.

3. In most towns, which landmarks are the most common? What important places are missing from this map? Provide a 1-2 minute explanation of the most important landmarks found on this map and missing landmarks. Use Audacity and save as an mp3. See attached document if you forget how to save an Audacity file as an mp3.

Brainstorm ideas:

4. Identify the least important landmark in this map (do not use la zona verde). In a Google document, explain why it is the least important.

Brainstorm ideas:

5. Your friend, Juan, from out of town is at la zona verde. He needs to visit his grandfather in the hospital, pick up milk at the supermarket, get a newspaper from the kiosk, and meet you at Telemar. Using your cell phone, call my school voicemail and leave a message providing directions in order for Juan to get to all of these places (267) 893-3000 EXT 3079.

Brainstorm ideas:

6. The township has decided to get rid of la zona verde (green zone). Argue against this change. Pretend I am the township, and send me an e-mail (agever@cbsd.org) explaining why this change should not occur.

Three important reasons for having a *zona verde*:

1. _____
2. _____
3. _____

Types of people who go to the *zona verde*:

1. _____
2. _____
3. _____

Activities to do in the *zona verde*:

1. _____
2. _____
3. _____

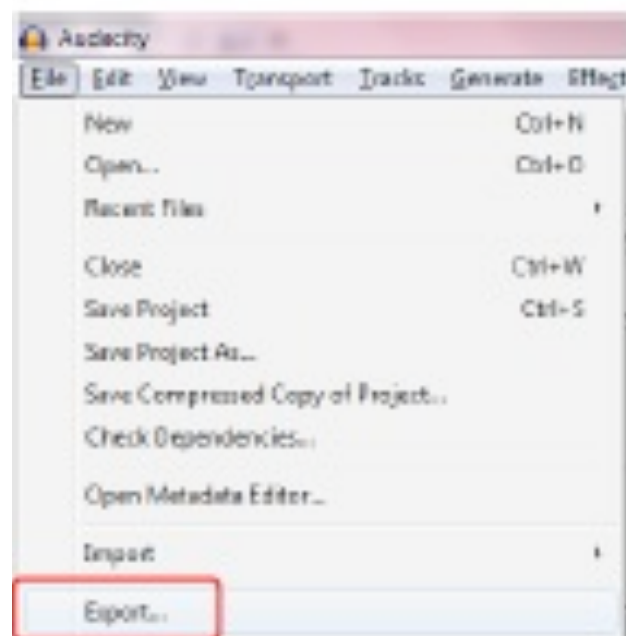
How you will be personally affected by not having a *zona verde*:

Me afecta porque _____

Think Dot at-level learners

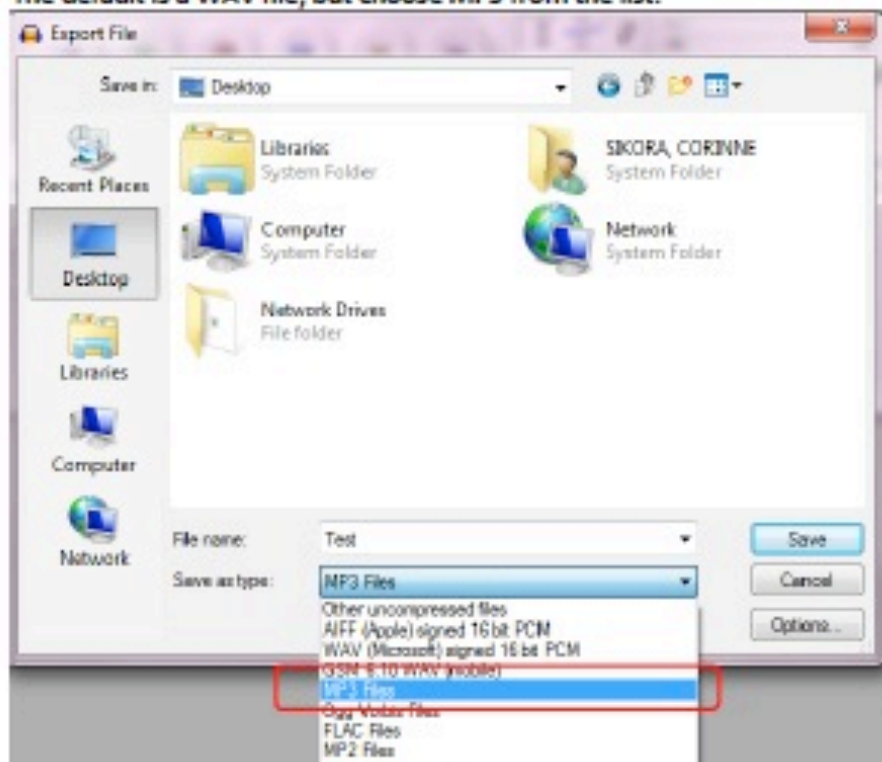


Saving as an MP3 file looks a bit different, but is really the same process
Choose Export.



Think Dot at-level learners

The default is a WAV file, but choose MP3 from the list.



Don't worry about filling this in. Click OK.

